



WHAREKAUHAU

EXPERIENCES GUIDE

2019 / 2020

*"The purpose of life is to live it, to taste
experience to the utmost, to reach out eagerly
and without fear for newer and richer
experience." — Eleanor Roosevelt*



Croquet on the main lawn



Cycle the many trails



Welcome to Wharekauhau and the Wairarapa region. The Wairarapa is one of the great agricultural hubs of New Zealand, and dates its sheep farming heritage back to some of the original sheep stations of New Zealand. It is bordered on two sides by dramatically beautiful and relatively uninhabited coastlines. The more recent half-century has seen the rise of vineyards, and revival of some of the original townships of Greytown and Martinborough

Since the inception of the lodging aspect of Wharekauhau the property has always taken great pride in being driven by the experience. We consider ourselves ‘jeans-and-boots’ by day, and are advocates for getting out and exploring the property and the greater region.

We suggest to all guests that they take a moment to browse this guide, and advise us if there are any experiences they wish to book prior to arriving at the estate. We do highly suggest pre-booking. All guided experiences have a charge associated with them, it also outlines inclusions and rough times to help you better plan your stay with us.

Further information can always be found on our website www.Wharekauhau.co.nz

FARM & ESTATE EXPERIENCES

- Farm Tour.....4
- ATV Quad Bike Tour5
- Fishing From the Beach.....5
- Clay Target Shooting6
- Archery.....6

REGIONAL EXPERIENCES

- Martinborough Wine Tour8
- Martinborough Wine Experience – Soil+Barrel+Cellar+Passion8
- Cape Palliser Lighthouse and Seal Tour9
- Royal Wellington Golf Club9

BESPOKE HELICOPTER EXPERIENCES

- The Ultimate Foley Wine Flight11

THE HAUORA SPA

- Spa Treatments.....13
- Hauora Signature Treatment14

Please note all activity rates are in NZD\$ and are inclusive of GST (15%)



FARM & ESTATE EXPERIENCES

“Exploring our backyard”





Wharekauhau Farm Tour

A Wharekauhau **Signature experience**! Exchange your shoes for gumboots and head out onto the farm with one of our experienced farm guides. From foothills to river valleys – pasture land to coastal escarpments this tour covers everything you could imagine relating to Wharekauhau.

We put the lodges fleet of four-wheel drive vehicles to good use as we explore the farm. A chance to get up close and learn how Wharekauhau was built from its farming heritage as New Zealand's second oldest Romney Sheep stud, through to its current farming/tourism structure.

A great opportunity to watch the team shearing sheep, and see the dogs working to whistle. Get a greater understanding of the flora and fauna on the estate as you cross through the many micro-climates, including the famous fern-forest, and and of course stop at some jaw-dropping view-points.

Important Information

- \$185 per person
- Departs form lodge at 0930 each morning
- Returns 12/1230pm
- Bookings are essential
- We suggest sneakers, or sturdy walking shoes, however we have a range of gumboots for guests
- We do remind people that being a working farm sometimes the farm manager has situations he needs to tend to urgently and we occasionally have to postpone, and reschedule the sheep shearing and dogs working.
- Sheep shearing and dogs working does NOT happen on a Sunday, however we do try and schedule that for Monday mornings.





ATV QUAD BIKING

Ideal for the adventurous, these bikes are loads of fun. We start with 20 minutes of tuition, before we venture out under the watchful eye of one of our guides. Such a great way to travel along the black sand beaches, over scenic riverbanks, through the native forests and along open pastures.

Important Information

- \$295 per person
- Approximately 100 minutes
- Riders **must** be a minimum of 16 years of age
- No option to 'double' or have pillion passengers
- We suggest sneakers, or sturdy walking shoes, however we have a range of gumboots, and wet-weather gear for guests

FISHING FROM THE BEACH

The bountiful coastline along Palliser Bay offers a variety of interesting and edible fish. Discover the best spots to fish with professional instruction. All fishing is very tide and weather dependant

Surf-Casting

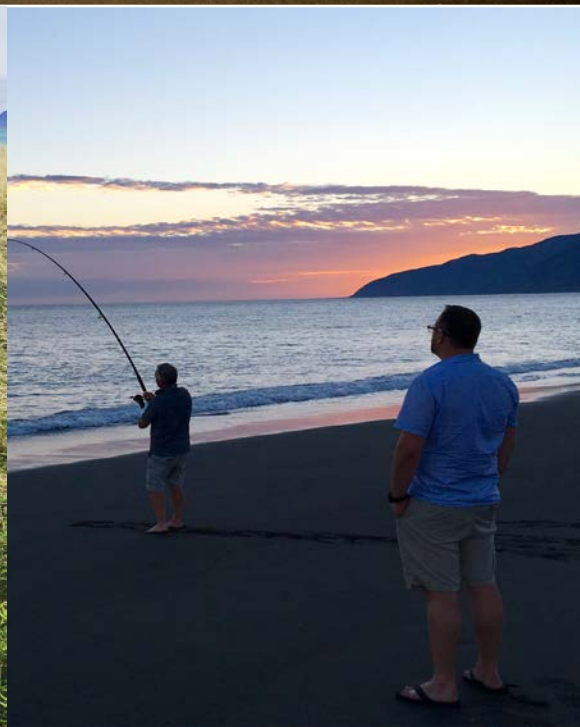
Your guide will take you down and set you up for a couple of hours of beach fishing with the surfcasting rods.

Kiwi Beach Fishing Experience

Head down to the beach with your guide, and find the Wharekauhau fishing caravan set with refreshments and snacks. Includes surfcasting, Contiki, picnic lunch, beverages, and guide. ***This Experience MUST be booked in advance***

Important Information

- **SURF-CASTING:** \$195 up to two persons for two hours fishing
- Additional persons charged at \$35 per person
- **KIWI-BEACH FISHING:** \$695 for up to two persons for three hours fishing
- Tide, swell and weather dependent
- We suggest sneakers, or sturdy walking shoes, however we have a range of gumboots for guests





SPORTING CLAY TARGET SHOOTING

Beginner

Clay shooting tests the reflexes like no other sport, and what better place to enjoy a shoot than Wharekauhau's own sporting clay-target field located in the Wharepapa gorge. Guests can shoot the various traps located in some of the most stunning natural surroundings

Advanced

Designed for the experienced shooter, or those wishing to step up from an introduction to sporting clays. We start with some classic down-the-line shooting at the Southern- Plateau, before moving North and shooting the various sporting traps, including a session at the 'Foleys-Flyer' multi-trap. Then finishing with the rolling 'rabbit' trap.

Important Information

- **Beginner:** \$195 per person (25 clays)
- **Advanced:** \$315 per person (75 clays)
- .12 Gauge shotgun
- .410 available for younger shooters
- Allow 1 hour for Beginner level, and 2/2.5 hours for the Advanced

ARCHERY

The ancient sport of archery has enjoyed a resurgence in popularity on the back of The Lord of the Rings and The Hobbit films.

Full instruction and a range of archery equipment are available at Wharekauhau such as: recurve bows, left and right handed and compound bows. The archery experience involves a mix of stationary board targets, and walk-up 3D targets.

Important Information

- \$155 per person
- Allow 1 hour
- We suggest sneakers, or sturdy walking shoes, however we have a range of gumboots for guests



REGIONAL EXPERIENCES

“From getting amongst the Martinborough wineries through to exploring the seal colony and rocky outcrops of Cape Palliser come and explore the road less travelled”

#traveldeeper



Sampling straight from the barrel

Martinborough Wine Tour

International wine experts rate Martinborough as one of the finest wine growing regions in New Zealand and its Pinot Noir equal to anything that Burgundy has on offer. This tour is a great introduction to the region.

Your personal guide will chauffeur you around the selected vineyards and introduce you to the wines and the people behind them. Included with this tour will be lunch at one of the vineyards or at one of the cafes in the village. Perhaps even fit in a little shopping in the boutiques.

Important Information

- \$365 per person
- Departs the lodge at 10:30am
- Returns to the lodge 3:30pm (approximate)
- Visits to 3-5 Martinborough vineyards
- Lunch and all wine tastings is included
- Other guests **may** also be on tour, unless a private surcharge is applied.

Soil+Barrel+Cellar+Passion Wine Tour

Three of the biggest influences in great wines combine in a one day tour. Look, see, smell, touch, and most importantly taste the influence that, the soil, the barrels, the vintage and the passion have over our tiny region.

The Martinborough wine region has been growing vines for about 30 years. A young region by comparison globally, but one of the oldest in the New Zealand wine world. Enjoy the rare opportunity to get passed the cellar door and into the private cellars of some of the craftsmen of our region. Without giving all of our secrets away some of the highlights of the day out would include;

Learning about the soil that allows the vines to grow so well; Drawing samples form barrels and enjoying some barrel tastings; Vertical tasting in the private Foley Wines cellar

Important Information

- \$995 per person
- Departs the lodge at 10:30am
- Returns to the lodge 3:30pm (approximate)
- Lunch and all wine tastings is included
- Includes at least 3 vineyards and barrel tasting, as well as library tasting
- Guaranteed private tour



Brown Fur Seals at the Nursery Colony



15th hole at RWGC



XX hole at RWGC

CAPE PALLISER LIGHTHOUSE & SEAL TOUR

Cape Palliser is the most Southern-tip of the North Island, and home to some of the country's most beautiful and rugged coastlines. This full day out gives a great insight and learnings into what makes this coast so wild and special. Arriving at Cape Palliser we will find the Cape Palliser Lighthouse, and its 241 steps up the rocky escarpment. Exploring the rocky shore below we will see the 'Nursery Pool' which is home to the largest Brown Fur Seal colony in New Zealand, and a great chance to watch the adult and pup seals play in their natural environment. A perfect tour for those that want to get out in nature, and explore one of the more quiet and serene corners of New Zealand.

A trip to the South Coast is not complete without stopping into the North Islands most Southern and historic pub – The Lake Ferry Hotel for fresh line-caught fish and chips, before returning to the lodge mid-late afternoon.

Important Information

- \$365 per person
- Lunch is included
- Departs at 10:30am
- Returns at 4:00pm (Approximate)
- We suggest sneakers, or sturdy walking shoes

ROYAL WELLINGTON GOLF CLUB

A 10 minute helicopter, or a 90-minute drive brings you out to our partner Golf Course 'Royal Wellington'. A wonderful Parkland 18 hole course that runs parallel to the Hutt River. The course was first opened in 1855 and then redesigned in 2013 by Greg Turner. **Please note** transfers are **not** included, but can be arranged in advance.

Important Information

- \$295 per person
- Includes club hire, green fees, and cart hire.



BESPOKE HELICOPTER EXPERIENCES



*“Ultimate experiences across the upper South Island
and Lower North Island with our partners Garden City
Helicopters”*



The Ultimate Foley Wine Flight

Helicopter.....Sauvignon Blanc....Pinot Noir.....BBQ Lunch, it couldn't get more 'kiwi' if we tried!!

We have combined the the Foley Wines portfolio of Marlborough and Martinborough to produce one of the words most amazing wine experiences.

Lift off from the Wharekauhau front lawn and fly South over the Cook Strait to the famed Marlborough wine region. The legendary home of New Zealand Sauvignon Blanc!

Landing first in the more well known Wairau Valley you will find Grove Mill vineyard. A more recent member of the Foley Wines collection of vineyards, and an industry leader in sustainability. Re-boarding your heli-taxi you will head out over the Awatere Valley to Vavasour vineyard. The Awatere is the 'baby brother' valley in this area, however Vavasour is the first vineyard that Bill Foley fell in love with and purchased. It has produced some outstanding wines and in 2017 was the supreme winner of the Worlds Best Sauvignon Blanc

Returning North over the Cook Strait, and tracking over Cape Palliser, up the East-Coast shoreline, and crossing the divide back into Martinborough you will touch down at Te Kairanga for a chef prepared private lunch and tasting of Te Kairanga and Martinborough Vineyards. Both of these estates are leaders in the production of Chardonnay and Pinot Noir, and feature around the world in most great cellars

Important Information

- \$12,125 for up to 6 persons
- Exclusive to guests of Wharekauhau
- Roughly a 4.5 hour experience
- Includes experiences in two key wine regions of Martinborough and Marlborough and landings at Grove Mill, Vavasour, Te Kairanga vineyards
- Includes lunch
- Private excursion only
- Bookings are essential



Relaxing poolside in the Hauora Spa complex



HAUORA SPA

Wharekauhau Country Estate | NZ

For over a century Wharekauhau has been regarded as much more than a lodge or a farm. The land's special spirit has captivated, inspired, and resonated deeply with those that have experienced Wharekauhau. ...It is a place where the thunderous Pacific waves meet the wind-swept black-sand beaches;... A place where the mountains seem to rise up out of the ocean and kiss the clouds;... A place that the naturally dramatic surroundings can influence healing, self-consciousness, and provide a distinct sense of place and calmness...

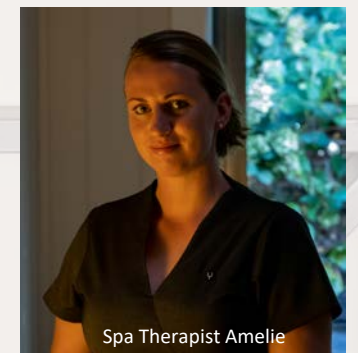
Hauora, (*Pronounced; Ho-ore-a*), is a Maori philosophy of total health and well-being, and we believe it pays great tribute to the people, and energy of the land, past and present.

The concept consists of the four dimensions of Hauora;

- Taha Tinana:** Physical Wellbeing
- Taha Hinengaro:** Mental & Emotional wellbeing
- Taha Whanau:** Social Wellbeing
- Taha Wairua:** Spiritual wellbeing

Amelie Aegerter
Resident Spa Manager

HAUORA SPA



Spa Therapist Amelie

Hot Stone Massage



Magical Manicures!



Honey Facial



Massage

Relaxing Massage	60 min	\$195
Relaxing Massage	90 min	\$260
Deep Tissue Massage	60 min	\$220
Deep Tissue Massage	90 min	\$360
Hot Stone Massage	90 min	\$270
Warm Bamboo Massage	60 min	\$230
Pregnancy Massage	90 min	\$230

Hands & Feet

Manicure	60 min	\$140
Pedicure	60 min	\$160
Men Express Mani or Pedi	40min	\$110

Available Nail polish: CND every day Vinylux polish, CND shellac.

Facials

Anti-Aging Facial & Eye Mask	60 min	\$240
Manuka Honey Signature Facial	60 min	\$255
Rejuvenating Men's Facial	60 min	\$220

Body Treatments

Green Tea & Silica Wrap	90 min	\$380
Full Body Massage & Facial	90 min	\$390
Hair Treatment & Facial	120 min	\$540
Facial & Pedicure or Manicure.	90 min	\$340
Farmer's Pampering Sensation.	190 min	\$680

Hair & Scalp Treatments

Wash & Blow Wave	60 min	\$150
Moroccan Oil Deep Conditioning Mask & Hair Treatment	90min	\$195

Important Information

It is preferred spa treatments are booked prior or on arrival and all treatments are subject to availability.

So you may fully enjoy your spa experience, mobile phones should be turned off, and no alcohol should be consumed prior to your treatment

Couple treatments

There is an additional charge of \$55 per person

In-Cottage treatment

Can be arranged for a \$100 additional charge.

Cancellation

If your treatment booking is cancelled within 12 hours of the scheduled treatment, a 50% cancellation fee does apply.



Hauora Signature Treatment

Our Signature Body Polish begins with a Manuka & sea-salt rich in essential-minerals exfoliation, detoxify and leave your skin primed to be cocooned in a silky warm Manuka Honey mask, followed with the therapeutic benefits of a full-body massage.

This treatment is designed to assist in helping hydration, cellular regeneration and promotes anti-aging.

\$400 90 min

Add a Manuka honey Facial while the Body mask is resting

\$555 135 min



Wharekauhau Country Estate
Telephone: +64 (0) 6 3077581
Email: reservations@Wharekauhau.co.nz